



STEP GPED Gummed Paper Electric disperser

OPERATING MANUAL

MANUAL-EN



CONTENTS

SAFETY NOTICE	2
DISPENSER PARAMETERS	2
STRUCTURE INTRODUCTION	3
KEYPAD OPERATION INSTRUCTION	4
ROLL GUIDE INSTALLATION INSTRUCTION	5
TAPE INSTALLATION INSTRUCTION	5
UPPER TAPE PLATE INSTALLATION INSTRUCTION	6
BRUSH OPERATION INSTRUCTION	6
WATER BOTTLE OPERATION INSTRUCTION	7
MAINTENANCE INSTRUCTIONS	7



SAFETY NOTICE

Please use 220V power supply.

Avoid placing in direct sunlight and outdoors.

Please cut off the power quickly when break down.

Please disconnect the power supply and remove the plug , when cleaning or repairing equipment.

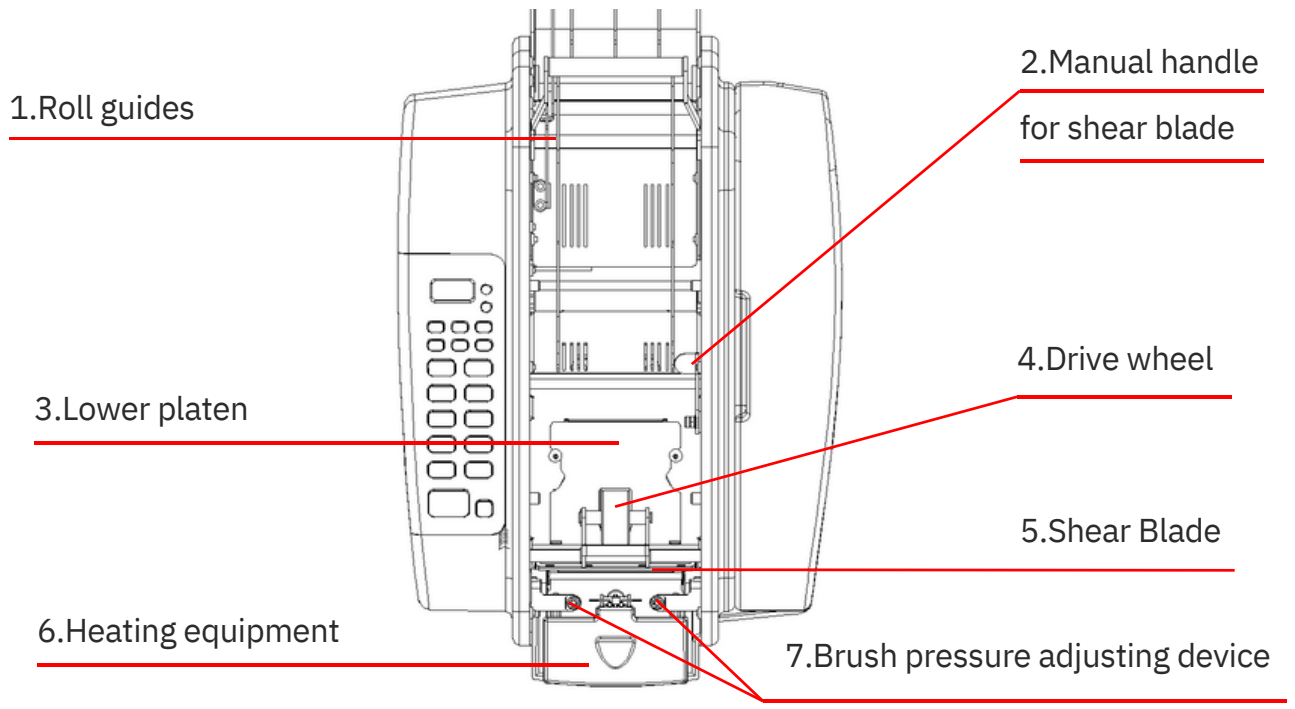
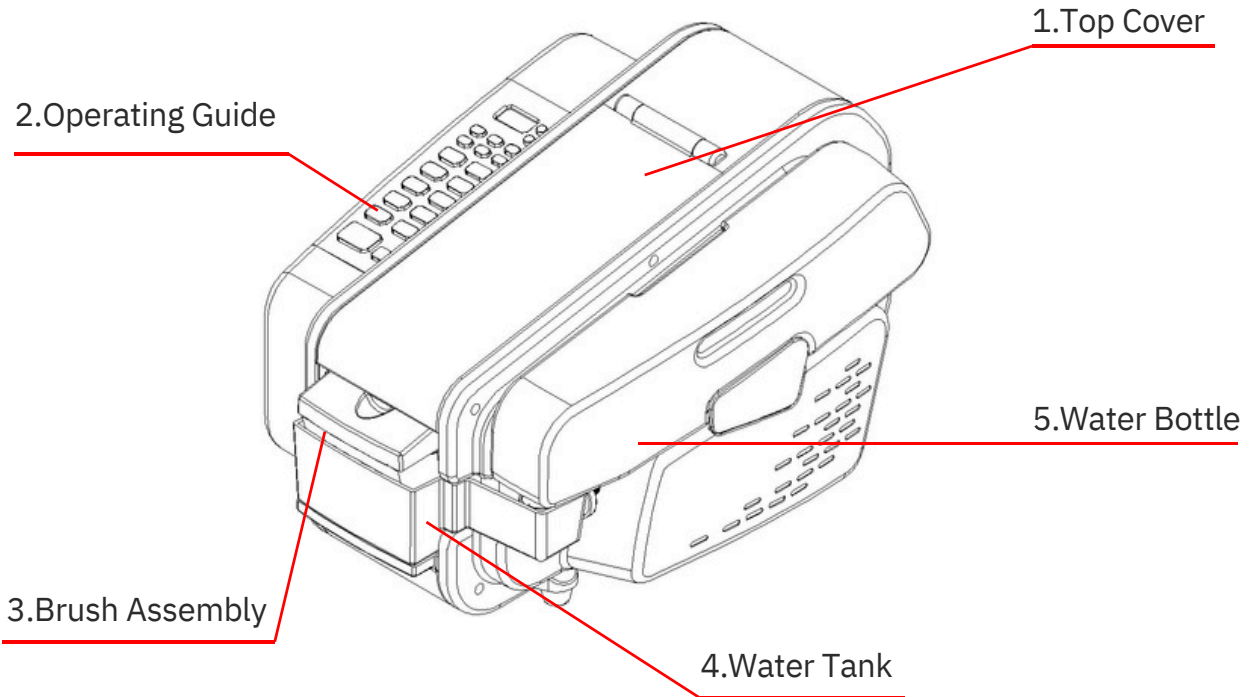
Do not disassemble or repair equipment without the knowledge of engineer.

DISPENSER PARAMETERS

Voltage	Power	Speed	Weight	
220V	200W	30M/Min	12KG	

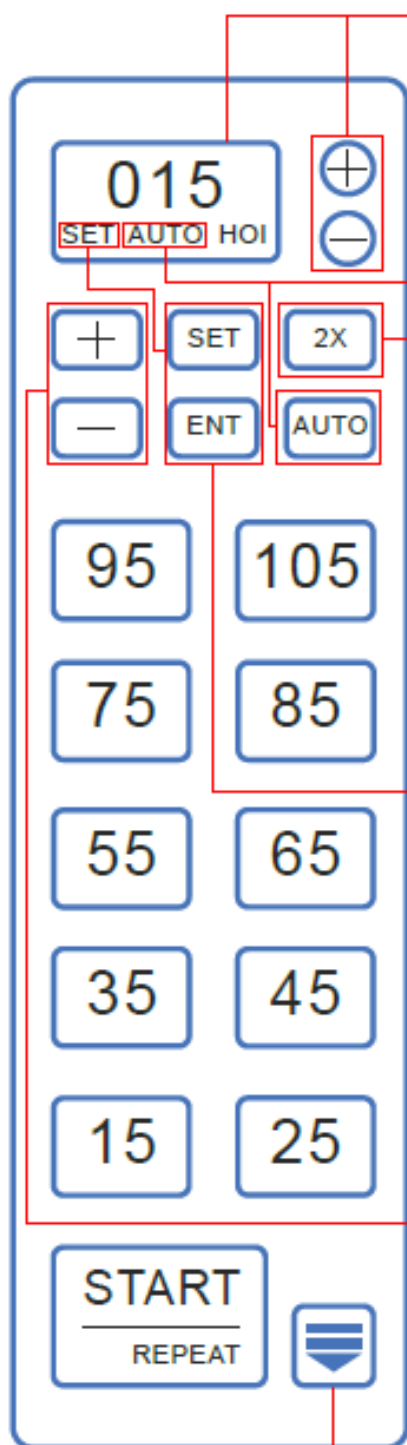


STRUCTURE INTRODUCTION



KEYPAD OPERATION INSTRUCTIONS

Gear	Temperature
1	18°
2	36°
3	54°
4	72°
5	90°



Temperature Control button

H: 0 without temperature.

H: 1-5 different temperature ranges.

Summer setting: H-3 \ Winter setting: H-5

Auto continuous mode

Pressing the AUTO button, then press any value, the tape is dispensed, and the same length tape will be automatically dispensed. Press the AUTO button again to cancel the automatic mode.

Double length button

2X Button Doubles selected length.

For example, to dispense 30CM tape, first press the 2X Button, then press the button 15.

Programming mode

For example, to continuously dispense different sizes: 15-35-55CM.

First press the SET button to enter the programming mode;

Pressing the button accordingly: 15, 35, 55.

Press the ENT button to confirm and press the START button start to dispense.

Press the SET button again to cancel the programming mode.

Length adjustment button

Plus button adds 1 cm to selected length.

Minus button subtracts 1 cm from selected length.

For example, to dispense 17CM tape, press the plus button twice, and then press the button 15.

Press and hold the manual feed button the tape is dispensed continuously.



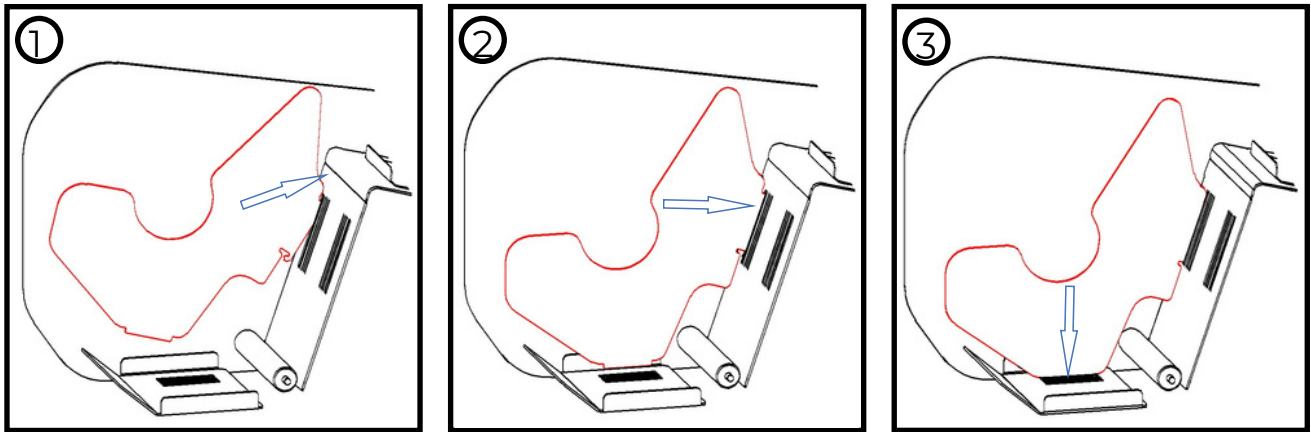
ROLL GUIDE INSTALLATION INSTRUCTION

According to the actual tape width, install the roll guides at its proper position.

See Figure 1, Insert the upper part of the roll guide into the front slot.

See Figure 2, Insert the lower end of the roll guide into the front slot.

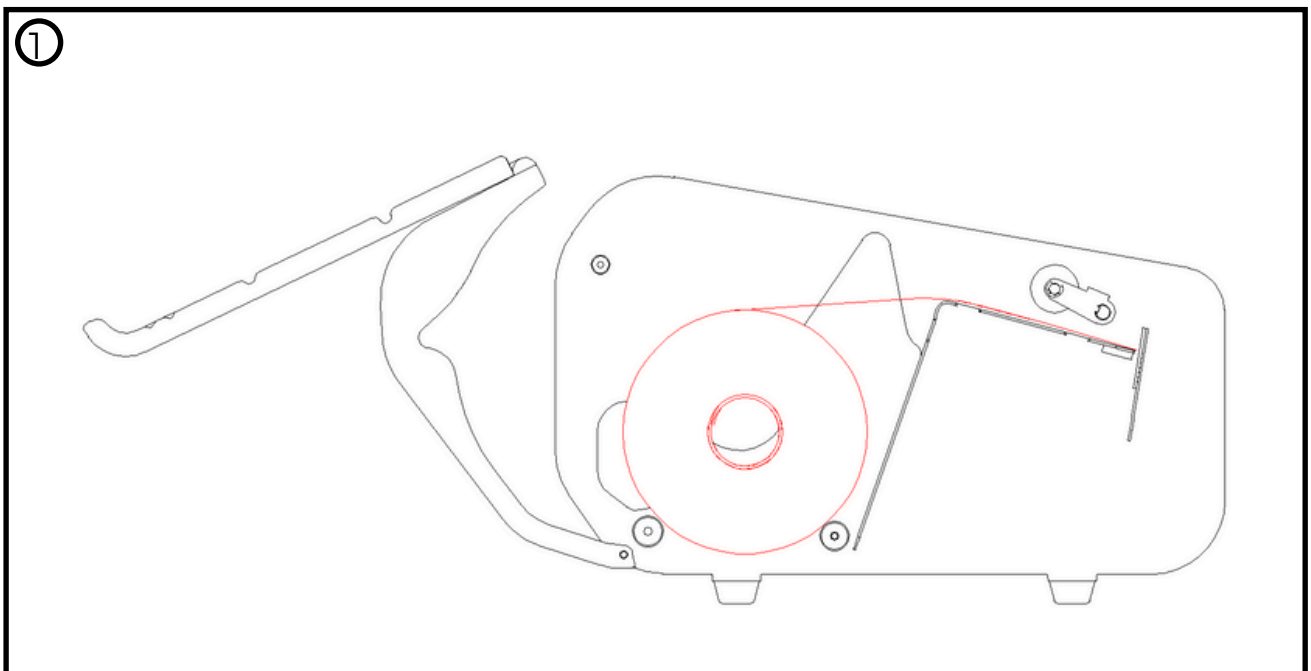
See Figure 3, Insert the roll guide into the bottom slot.



TAPE INSTALLATION INSTRUCTION

As shown in Figure 1, pass the adhesive tape through the upper guide wheel and push it to the cutter.

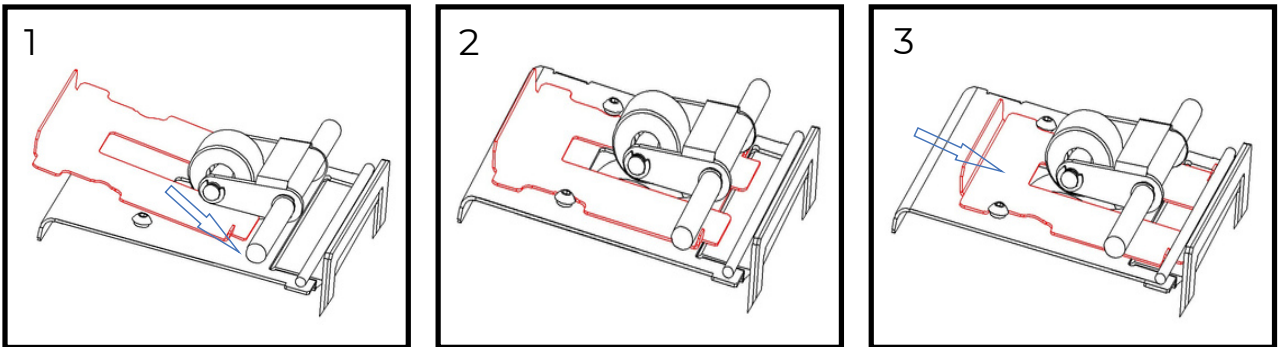
Pass the tape through the upper guide wheel and push it to the cutter.



UPPER TAPE PLATE INSTALLATION INSTRUCTION

Check the upper tape plate if it is in its proper position.

Install the Upper Tape Plate as shown below.



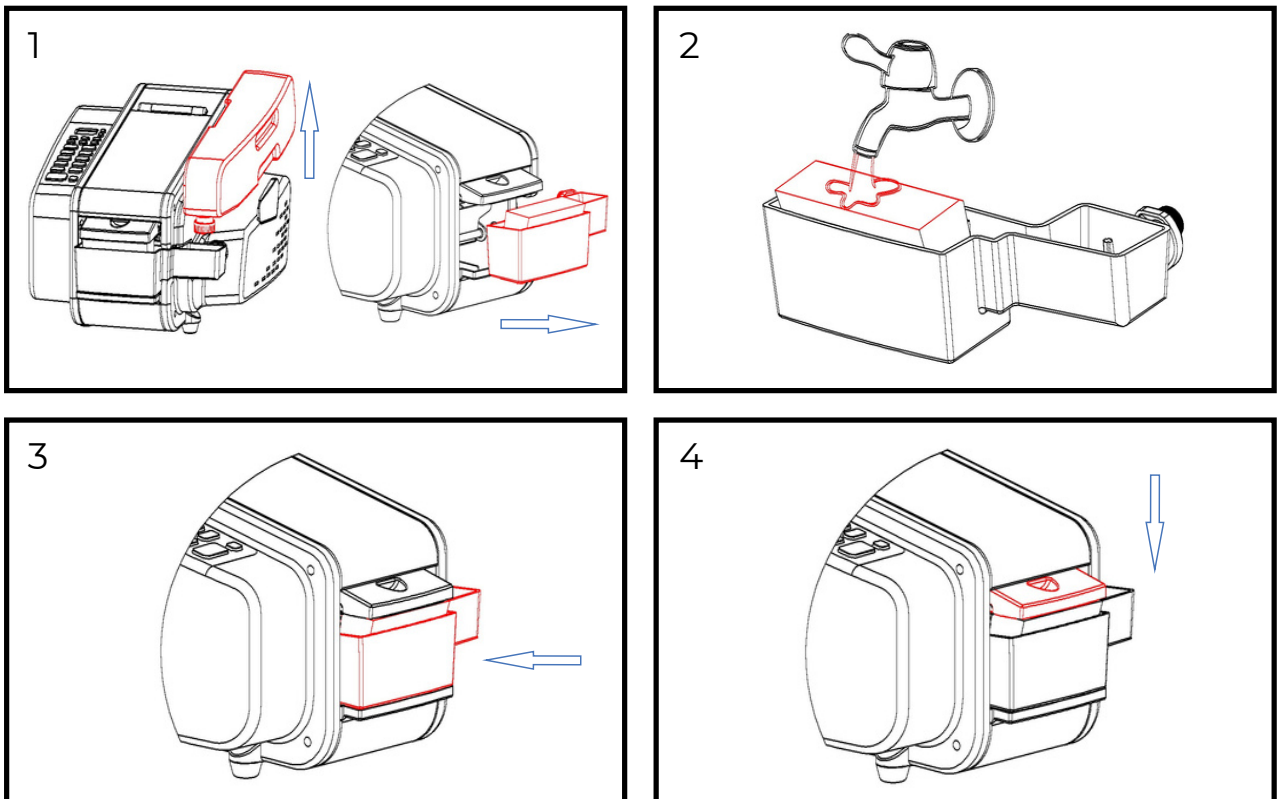
BRUSH OPERATION INSTRUCTION

As shown in Picture 1, first take out the water box to fill it with water, then take out the water tank.

As shown in Picture 2, water the top surface of the brush until the brush is completely soaked.

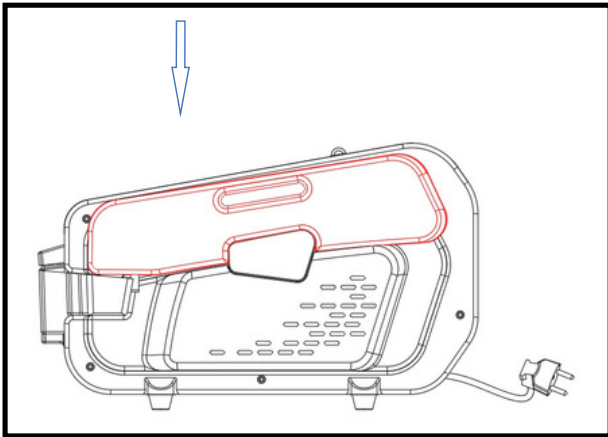
As shown in Picture 3, put back the water box, and then put back the water tank.

As shown in Picture 4, gently press down the red part with your hand to make it fully contact with the brush.



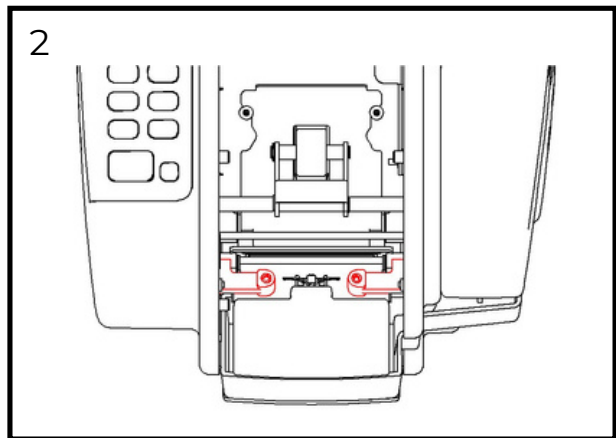
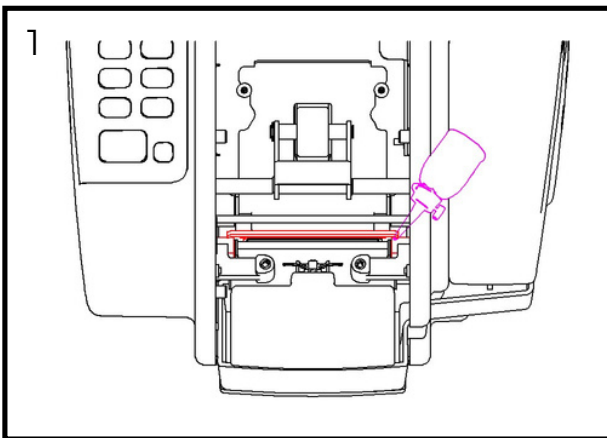
WATER BOTTLE OPERATING INSTRUCTION

Fill the bottle with water and place its proper position. Caution: Pay attention to the amount of water remaining in the water bottle when using. Make sure the brush stays wet.



MAINTENANCE INSTRUCTIONS: ACCORDING TO THE ACTUAL USE TIME, REGULAR MAINTENANCE

As figure 1 show, clean and inject lubricant once a month. Picture 2 If a paper jam is found, the amount of water applied is small or uneven, the tightness of the two screws indicated by the arrows can be adjusted. The first time you use the tape, the sticky side of the tape has too little moisture. Please cut off several pieces of tape multiple times.





**Sal-Tech Easy Packaging
part of
Salbæk Technology Group**

**www.sal-tech.com
Skype: easy.packaging
support@sal-tech.com
+45 7027 2220**

Salbæk Technology Group

Main Telephone: +45 – 7027 2220
Eggebækvej 10, 6360 Tinglev Denmark
Skype: easy.packaging
Skype line: +45 – 3695 9804

Denmark HQ:

Sal-Tech Easy Packaging DK ApS

Eggebækvej 10
DK 6360 Tinglev
Reg. no.: DK44203642

Sal-Tech Easy Packaging

Sales & Service

+45 – 7027 2220 (24/7)

**Sal-Tech Easy Packaging,
Warehouse**

+45 – 7027 2230 (8-16 CEU)

Hong Kong – Sales, purchase & service:

Sal-Tech HKG Ltd.
Tai Hong Wai, Third Lane 28A-G/F
Kam Tin, Yuen Long, N.T. Hong Kong
+852 – 8170 1025
Reg. no.: 1553382

Spain – Sales & service

Sal-Tech Embalaje SL
Malaga, Spain
+34 – 699 900 987
Reg. no.: B01970045

Italy – Sales & service

Site Office, Milano, Italy
+39 – 351 988 0682

Sweden – Sales & service

Sal-Tech Easy Packaging Sweden
+46 – 31 799 5398

USA Chicago – Sales & service

Sal-Tech Easy Packaging LLC
2501 Chatham Rd. Suite N
62704 Springfield IL, USA
EIN no.: 35-2776554
+1 – 310 773 3423

USA Los Angeles – Sales & service

Sal-Tech Easy Packaging LLC
+1 – 310 773 3423

USA Hurst Texas – Sales & service

Sal-Tech Easy Packaging LLC
+1 – 310 773 3423

Philippines Manila/Cebu – Sales & marketing

Sal-Tech Marketing Service
+63 – 916 777 5299